

SUPERAMAS – Technical Rider YOUDREAM

Technical director, stage and transport manager

Martin SCHWAB +436604019436 dinuschwab@hotmail.com

Sound designer

Olivier TIRMARCHE +33614012325 olivier@superamas.com

Light designer

Henri Emmanuel DOUBLIER +33662873074 henri@superamas.com

This Technical Rider is part of the contract between the theater or the festival and Superamas for any performance of youdream. Whenever one of the points can not be fulfilled or any of the equipment can not be provided by the theater or the festival it must be announced in advance to Superamas and negotiated to find an appropriated solution.

The technical director is responsible, that all points that are not concerning technical matters are communicated to the responsible person of the theater or the festival.

LIGHT

- 96 dimmers 2kw dmx512 (48 are on the floor)
- 1 dimmer 5kw dmx512
- 10 profiles 2kw 20/36° type 714 Julia (it can be 16 profiles 1kw but 1 really need 2 profile 2kw)
- 2 profiles 2kw 50° with gobo holder and reduction small size
- 12 PC or Fresnels 2kw
- 18 PC 1kw with barndoors
- 1 Fresnel 5kw
- 12 floodlight 1kw
- 24 Pars 64 cp62
- 2 Pars 64 cp60
- 2 stroboscopes Martin atomic 3000
- 14 strong tripod stands (10 of 2m and 4 of 3m) and 4 pipes of 2m to put on the stands (it can be booms)
- 16 floor stands

Superamas brings:

- 4 Pars led 18 RGB 3w
- 1 red heads
- 16 halogen lamps 50w
- 4 dichroic leds
- 1 Sunstripe
- 5 small Manfrottos stands

we bring the filters: red 164, green 139, blue 119, 156, 136, 711, 201, R132, R119 but we prefer to use yours 'cause it's faster for the strike down.

We need dmx cables 3 and 5 pins for led pars, our fan and scroller.

Our Light board is a Lanbox dmx512

SOUND

- 1 digital mixing board Yamaha LS9-32
- 4 identical static microphones super-cardioid or cardioid or shotgun with grips and foam windjammer. Ref: **Sennheiser** MKH8050; **Neumann** KM184, KM185; **Scheops** CCM41, CCM22, CCM4; **AudioTechnica** AT4021, AT4041, AT4051b, AT4053b; **AKG** C430, C451B; **Shure** KSM137; **Berhinger** B-5, C-2.
- 1 microphone Shure SM58 with grip
- 2 microphone stands with boom
- 3 wireless (Sennheiser, shure or Micron) bodypack with 3 lavalier microphones (dpa) with ear-set support (preference for flesh color)
- 2 wireless handset with grip (Sennheiser or Shure)
- 8 DI box 48v powered
- 1 multipair 4 in (or more)
- 5 jack male-XLR male symmetric adaptors
- XLR cables

Speakers set-up (see the plans set-up 1 & 2) :

- 8 similar speakers: 2 Front, 2 Clusters, 2 Back, 2 Stage. Ref: L Acoustic MTD 112 or 115, d&b C90 or C60, John Meyer, EAW, KS, Nexo PS15... According to the theater volume
 - 2 front speakers hanged
 - 2 cluster speakers (2xmono)
 - 2 speakers on stage hanged in the back of the stage
 - 2 speakers hanged or on stands in the rear of the audience rack
- 4 sub bass speakers (very important)
- 5 wedges on stage (stage monitors, small size, like nexo PS10)
- Amplification system + speakers cables for the whole system

Notes: lines from stage to the mixing board = 13

VIDEO

- 1 video beamer (5500 lumens minimum)

We would highly appreciate a PANASONIC Ref :PT-DW5100E (pixels: 1280x768, wide screen) with keystone settings and lens position adjustment. The beamer can be hung in front of the screen, roof position (hook and optic to fit the screen, 4m wide)

Very important is that the video projector has a minimum resolution WXGA 1024x768

Here a list of types that are working for us :

- Panasonic PT-DW5100E
- Panasonic PT-DW6300ES
- InFocus IN5502
- Sony VPL-FW41
- Sanyo PLC-WM5500L
- NEC NP4100W

- 1 video shutter with a wire remote from the control desk.
- 1 VGA video cable for the computer (length adapted to the theater).

We bring a screen that unfold by itself and it needs power supply.

SET

- White dance floor for front part of the stage (9m/12m)
- Black dance floor for rear part of the stage (6m/12m)
- Black opening curtain at the middle of the stage
- 3 Borders to hide the screen and pipes
- Black curtain at the back and sides of the theater if it is not black and clean

IMPORTANT :

We hang up a "rain" system which spreads around 40 liters of water on the dance floor at the end of the show. We bring a vacuum cleaner to suck this water after the show, but we don't bring any kind of floor protection (as plastic cover), if needed the theater should provide such a floor protection to set under the dance floor. We experienced, that the dancefloor, carefully taped, is protecting the floor. We use a chainsaw on stage (without the chain) and it needs to be warmed up before the doors are opening. (if there are problems with neighbours: provide a space to do so)

The theater provides a studio for rehearsals of the improvisation-part.

For the improvisation part we kindly ask the theater for three "planted spectators". As in the performance we ask the audience to tell us dreams, which superamas are going to reenact on stage we ask the theater to help us with two dream tellers, that are telling a dream. Only in case nobody of the audience wants to do so. They can tell a dream they had, they used to have as a kid or a dream they simply made up. The third planted audience member should tell a dream which is written by Superamas. It's easy to tell and not a big text but the third actor should have a meeting of about half an hour with Philippe Riera. If you have questions about that, please contact Philippe:

philippe_superamas@yahoo.com

For the transport please note, that normally nobody of superamas crew member will be at your theater when our flycases are delivered or picked up. Normally our flycases should arrive about three to five days in advance of the set up days in order to have some days in cases of emergencies, the theater provides a space to store the cases in between (see list below). The cases are arriving in a truck with a hydraulic platform and are on wheels, so that it is easy to unload and load them. If the last show is on a weekend, note that the flycases will normally be picked up only on Monday and are not picked-up on celebration days neither.

Cleaning, ironing, sewing

We need a good professional for washing, dry cleaning, ironing and sewing, (from the venue).

Others

12 people travelling

For each performance: 1 bottle of good whisky (or whiskey) and 1 bottle of good vodka

Please provide water in bottles (without gas) for performances

Please provide milk! (1/2 liter for two shows) and coffee

Please provide showers with warm water, towels

mineral water, fruit juices (apple, orange), coca-cola, ice tea, soft catering (fruits, chocolate, cookies...) for the set-up day and the performance days

If the theater provides catering please note, that we have two vegeterians and one person that needs gluten free diet.

Audience space

Balconys and seats on the side (outside the stage-frame) have to be blocked and tickets can only be sold after confirmation by superamas.

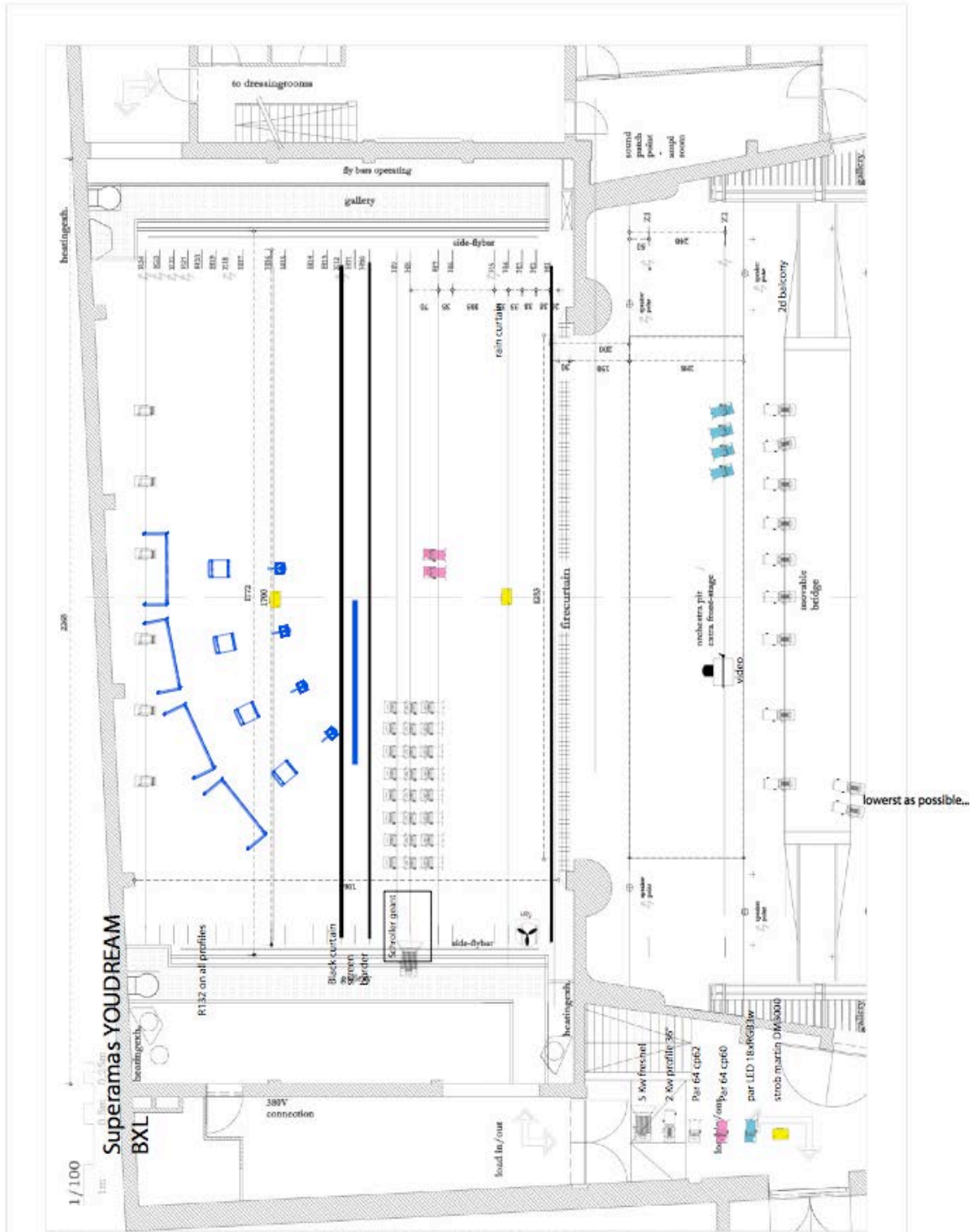
PLANNING

The number of technicians must be as asking for in the following planning. It is not possible that the technicians can be less than we are asking for, because they are allrounders. Only when certain tasks are done in advance, it might be possible to reduce the number of technicians working for the setup but this decision as to be done in coordination with Superamas.

Day 1	superamas	light	stage	sound	costume	video	
9.00-13.00	olivier/jerome/henri/martin	3	2	2	1	1	setup
14.00-18.00	olivier/jerome/henri/martin	3	2	2	1	1	setup
18.00-19.00	vincent					1	focus beamer
18.00	performers/phillippe						rehearsal in studio
19.00-23.00	henri	3	1				focus lights
Day 2							
9.00-11.00	olivier			1			Soundcheck Eqs
10.00-13.00	henri	2					light patch cueing
13.00-14.00	vincent					1	video adjustments
14.00-15.00	all	2	1	1			preparation for rehearsal
15.00-18.00	all				1		dress rehearsal
18.00-20.00	all	1	1	1	1		preparation for show
20.00 (?)	all	1	1	1			show
after show			1		(1)		cleanings
last showday							
tba					1		costume washing & ironing
17.00 (?)	all		1		1		preparation for the show
20.00 (?)	all	1	1	1			show
after show	all	3	2	1	1		strike







FLIGHT CASES LIST

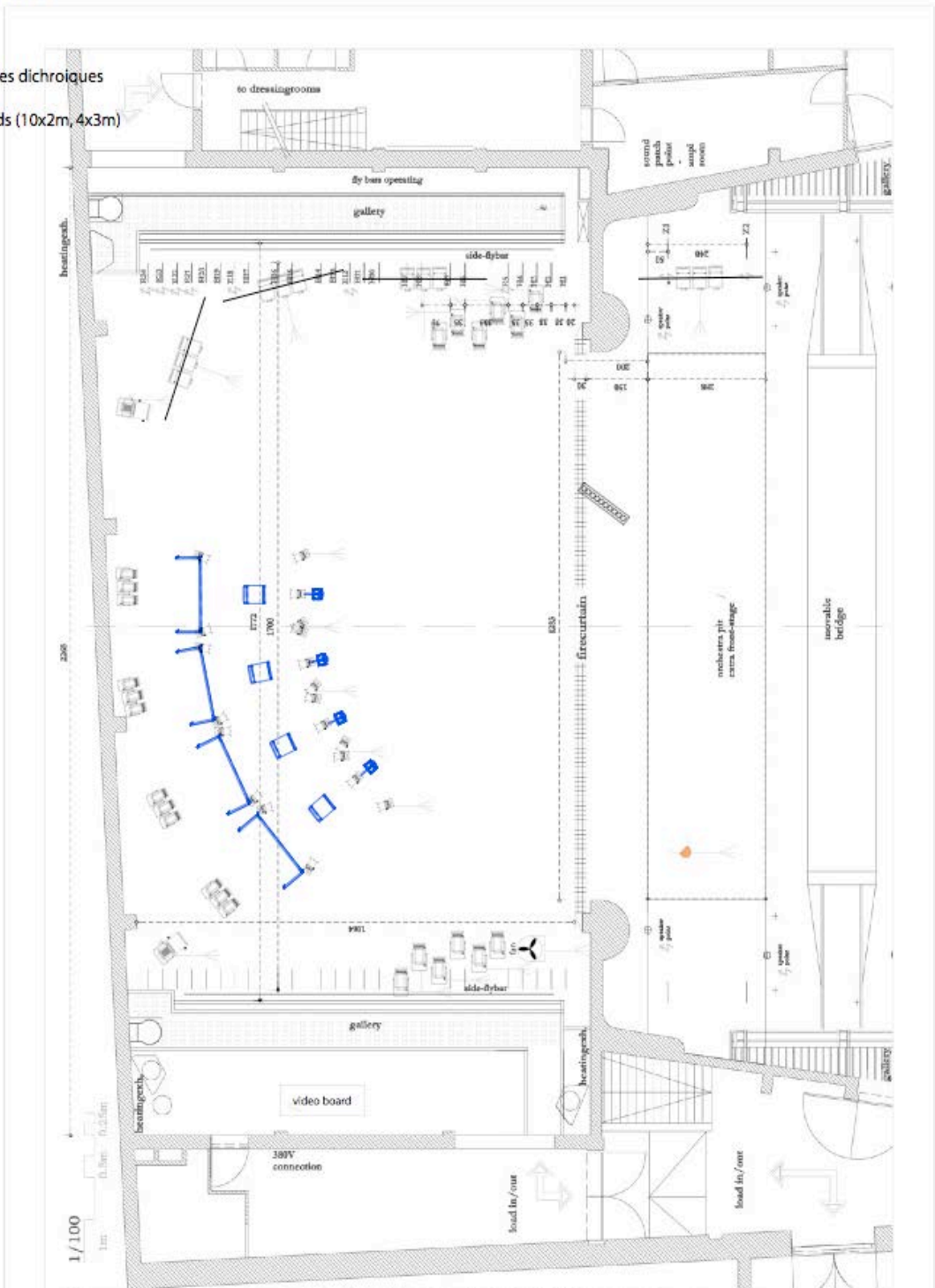
Flight cases YouDream	Width mm	Length mm	Surface m2	Height with rolls mm	Weight Kg	Volume m3
YouDream n°1 Back screens	700	2000	1,400	1130	271	1,582
YouDream n°2 Video	570	1300	0,741	850	130	0,630
YouDream n°3 Machines	800	1720	1,376	1790	294	2,463
YouDream n°4 Rain	630	1370	0,863	1310	170	1,131
YouDream n°5 Dance Pole	750	1710	1,283	810	201	1,039
YouDream n°6 Écran	450	4350	1,958	590	205	1,155
Total YouDream			7,620		1271	7,999



Kaaithheater Stage

10/03/2006

-  2 2kw profile 50°
-  12 2kw fresnels or PC
-  1 red head
-  16 50 hallogènes dichroïques
-  14 strong stands (10x2m, 4x3m)
-  1 sun strip

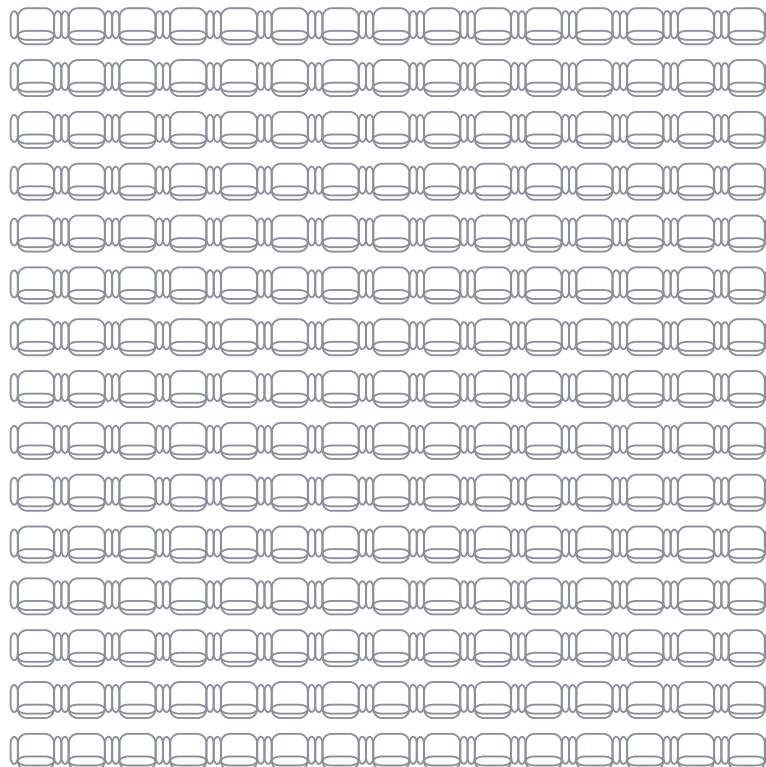
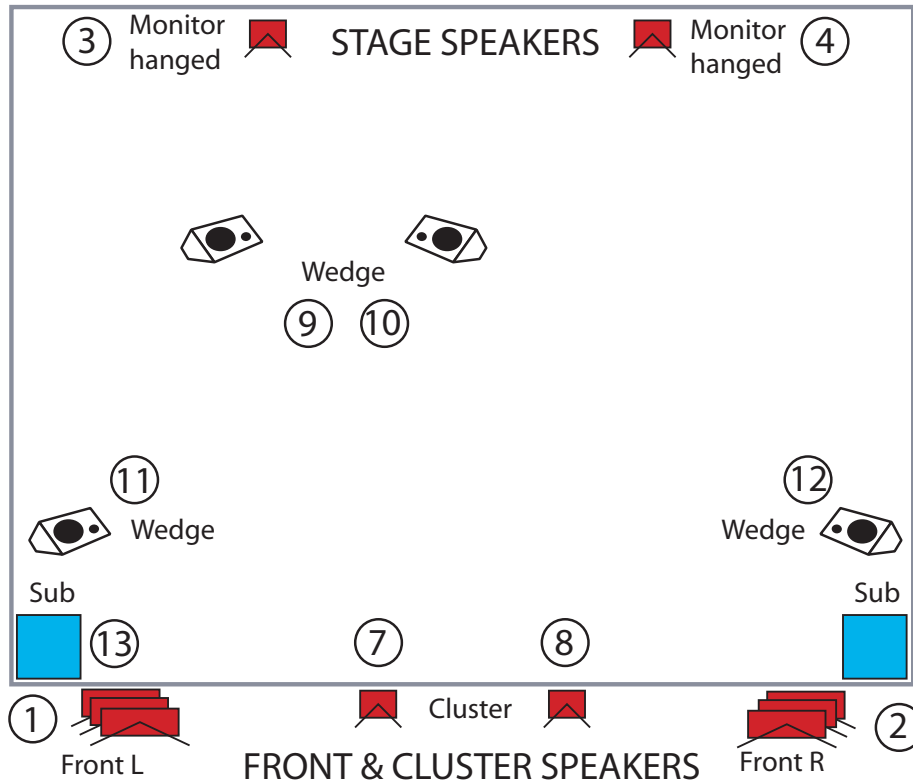


Kaaitheater - alenkaal 2 - 1000 Brussel - tel: **32 (0)2 201 58 58 - fax: **32 (0)2 201 59 65 - info@kaaitheater.be

Kaaitheater Stage

10/03/2006

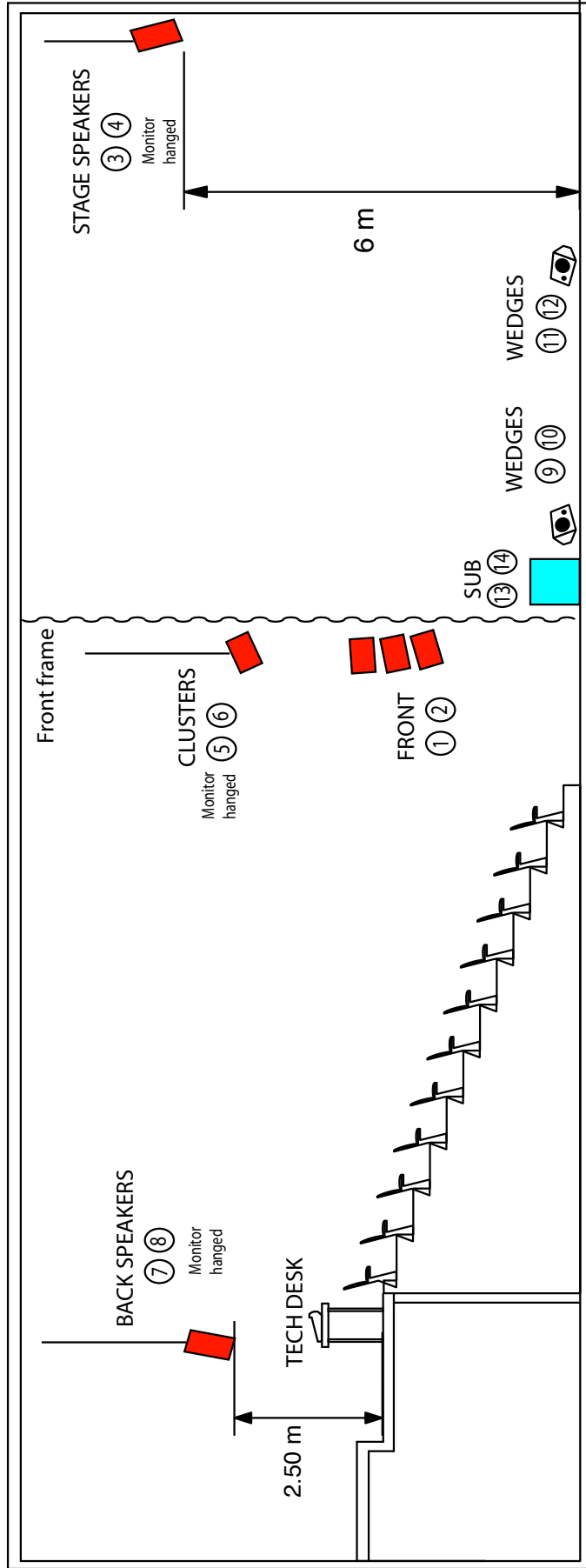
SUPERAMAS - YOUDREAM- LOUDSPEAKERS SET UP 1/2

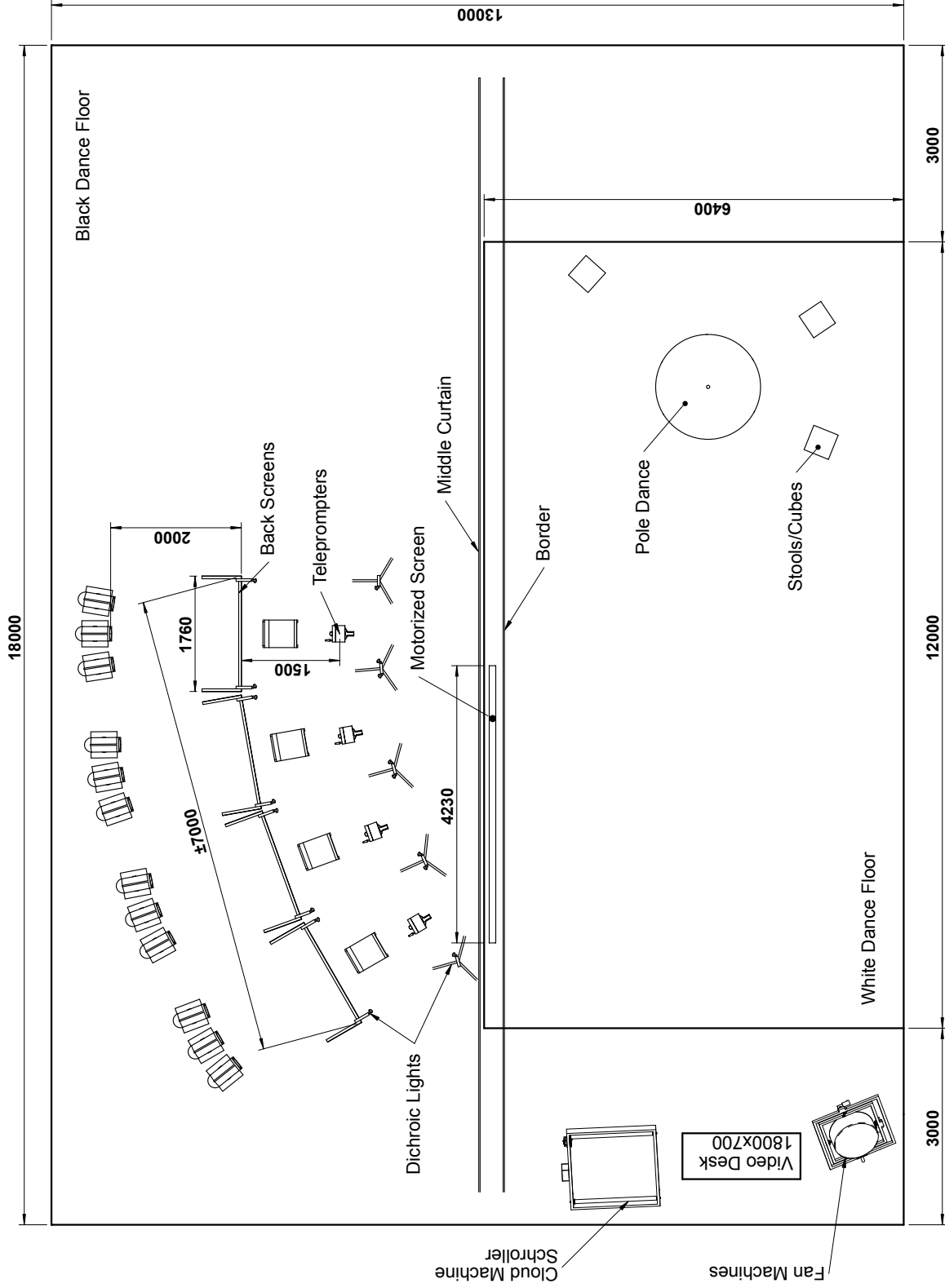


Monitor hanged ⑤ AUDIENCE SPEAKERS ⑥ Monitor hanged

SECTION

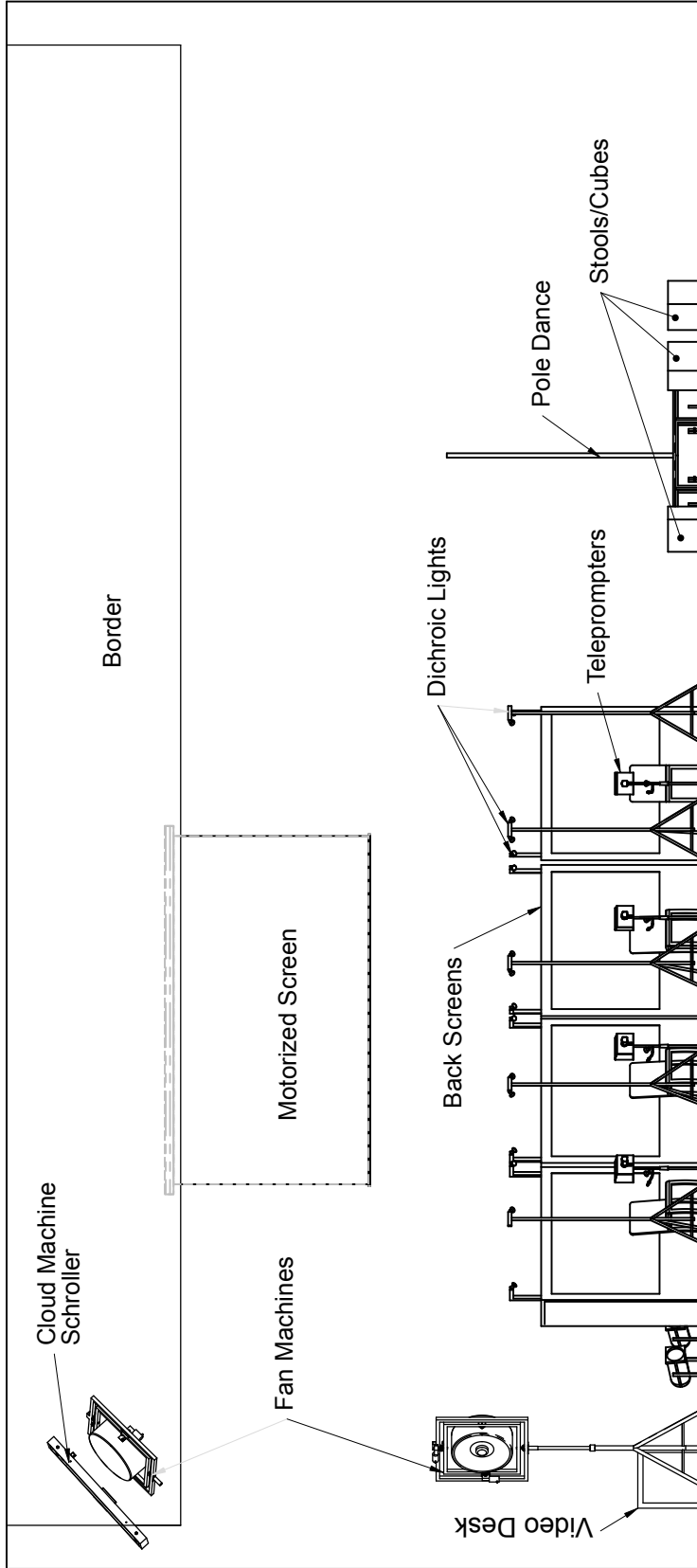
SUPERAMAS - YOUDREAM- LOUDSPEAKERS SET UP 2/2





Superamas
YouDream

Vue de Dessus
11/01/2011



Superamas
YouDream
Vue de Face
11/01/2011

