

# SUPERAMAS CASINO

light designer and technical director: Henri Emmanuel DOUBLIER +33662873074  
mailto: henri-emmanuel.doublier@wanadoo.fr

for more informations, please contact:

\*set Jerome DUPRAZ +33684106615

\*sound Olivier TIRMARCHE +33614012325

\*video Vincent TIRMARCHE +33613430257

As CASINO is a site specific project, there will be modifications necessary according the provided space at each venue.

Space :

The minimum rectangular area is 14m x 25m

The minimum height under ceiling is 4,50m

## General :

- We need to set-up a bar next to the space where the performance take place with light and sound equipment.

We need to set-up a small dressing robe for the actors with heating system and light nearby the performance area.

Costumes must be cleaned and dry after each performance.

2 bottles of beer for each performance.

## sound:

### Sound equipment to be supplied:

- 1 digital mixing board 16 tracks / 6 separate outs (Master+4 groups, 6 aux pre-post fader assignable).

Ref : Yamaha 01V96, 03D, 02R, DM1000, Tascam 3200

- 8 similar loudspeakers on 2m stands floor + 2 bass subwoofer on the floor.

Ref : Meyersound UPM 1P + UMS 1P subwoofer / Nexo PS10 + LS500 subwoofer /

db audio E3 + E12 subwoofer / Nexo PS15 + LS1200 subwoofer / EAW /

L acoustic MTD 112 or 115 + Subwoofer

- 3 wedge loudspeakers. Ref : Meyersound, Nexo, db, KS, EAW

- 6 stereo amplification system + speaker cables

- 4 graphic stereo equalizers (31 bands). Réf : BBS, dbx, Klark (no Yamaha)

- 4 compressors stereo Ref: dbx, drawner

- 1 CD player

- 1 headphone amplifier or a small mixing board with headphone out

- 1 microphone shure SM58

- 1 microphone Shure Beta 87

- 2 over-head microphones: Rode NTG1 or type AKG C 414B, AKG 391B

- 4 microphone stands

- 1 DI box 48v powered

- 1 multipair 4in/4out 30m

- 20 x 20m XLR microphone cables

- 6 x 1m mono jack 1/4 cables

- 1 headphone (good quality)

- 2 desk light

- 1 isolator box stereo

**Video:****Video equipment to be supplied:**

- 1 video beammer 2500 lumens minimum with access to the RVB tint and keystone settings and ceiling installation. Réf: Sony PLX 31 (no Sony PLX 20 or PLX 30), EIKI, BenQ, Sharp ProX
- 1 DVD player (with no displaying function)
- 40m video cable BNC with cinch adapter
- 1 screen 3m x 4m

**light:**






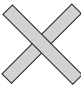
we bring our light board (computer)

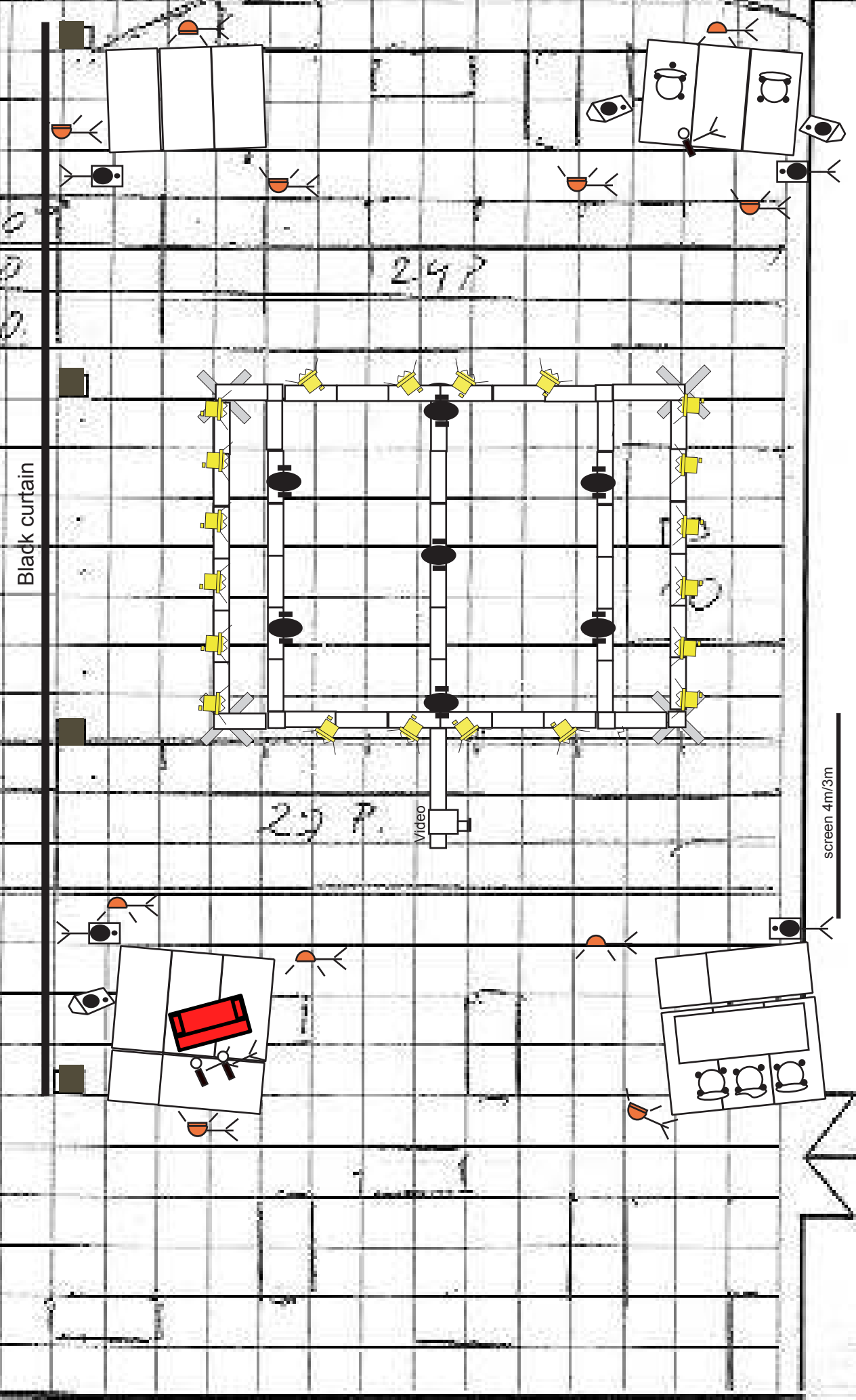
**Light equipment to be supplied:**

- 30 dmx 512 dimers (needed dmx 512 protocole only)
- electric cables...
- 20 fresnels 1kw
- 12 red heads
- 12 stands 4m high
- 7 moving heads Martin Mac 500 + 2 lamps + manual
- funny christmas lights for the bar...
- 6 x 5m DMX 512 wires 3 pins + 2 x 20m DMX 512 wire 5 pins 2 adapters 5 to3 pins in/out

**set:****Set equipment to be supplied:**

- we need a black dance floor on the playing area
- 5 x 6m aluminium truss (see plan attached below) hung 4m high + 4 motors and 4 straps (spanset) to hang it or self-standing with 4 x 4m strong stands (feet)
- 1 stage 3m x 2m 60cm high
- 1 stage 3m x 2m 80cm high
- 1 stage 3m x 3m 100cm high
- 1 stage 3m x 3m 120cm high
- 1 white sofa 3 places contemporary design
- 1 table 3m x 1m
- 5 chairs

-  Martin mac 500
-  fresnels 1kw
-  red head
-  loudspeaker
-  Wedge
-  stand



SUPERAMAS

screen 4m/3m

Video

Black curtain

2.97

2.57

40  
80  
40